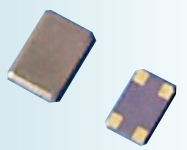


SMD OSCILLATORS



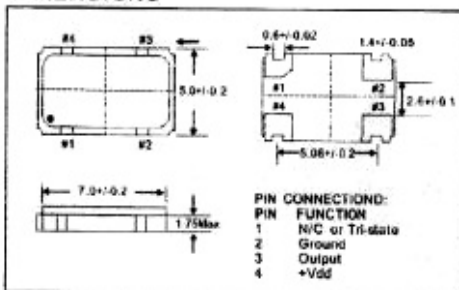
FEATURES:

- Ultrathin thickness 1.6mm or less.
- Wide frequency range.
- Featuring reflow solder.
- Generality by means of adoption of 4pins lead pattern.

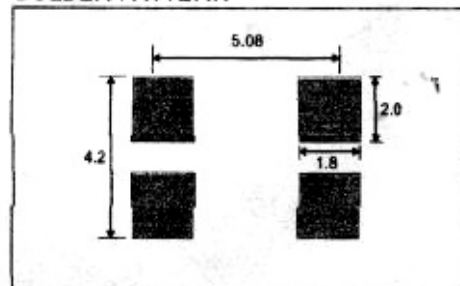
SPECIFICATIONS

Parameters	Conditions	Specifications		
Power supply voltage	DC	3.3V±0.3V	5.0V±0.5V	5.0V±0.5V
Frequency range	Over-Less than	1.800-125MHz	1.800-125MHz	
Operating temp. range		-10/+70°C		
Frequency stability	All conditions	±25ppm, ±50ppm, ±100ppm		
Driving ability	TTL Load CMOS Load	10LS TTL 15pF(max.)	10LS TTL 30pF(max.)	10LS TTL 50pF(max.)
Symmetry	0.5VDD		45%-55%	
Rise, fall time		5ns(max.)	10ns(max.)	5ns(max.)
Output voltage	VoL Level(max.) VoH Level(min.)	0.33V 2..97V	0.5V 4.5V	0.5V 4.5V
Current consumption		1.8-32:10m A 33-50:18m A 51-125:20mA	1.8-32:10mA 33-50:30mA 51-125:50mA	1.8-32:10mA 33-50:30mA 51-125:50mA
Output current	0 Level min. 1 Level min.	10mA 10mA	4mA 4mA	16mA 16mA
Stand-by current	At 0 Lev.AT#1	10uA(max.)	N/A	N/A
Start-up time	Frequency range	1.8MHz-32MHz 5ns(max.) 33MHz-125MHz 10ns(max.)		

DIMENSIONS



SOLDER PATTERN



TAPE & REEL

